

TABLE OF CONTENTS

Introduction and General Information.....	2
Special Programs	
Career and Transition Programs.....	3
Challenge for Credit Opportunities.....	3
Fine Arts Certificate Program.....	3
French Immersion Program.....	4
Trades Course Options at FHS.....	4
Mathematics Course Selection and Planning.....	5
New Brunswick High School Graduation Requirements for students graduating in 2025.....	6
New Brunswick High School Graduation Requirements for students graduating in 2026 and beyond	7
Index of Available Courses by Clusters	8-9
Index of Courses Alphabetically.....	10-11
Course Descriptions Alphabetically.....	12-29
Local Option Courses & Descriptions.....	29
Courses with Pre-requisites and/or Applications.....	30
Grade 10 Course Selection Planning Sheet	31
Grade 11 Course Selection Planning Sheet	32
Grade 12 Course Selection Planning Sheet	34

Important

All courses are subject to limited enrollment and may be cancelled if numbers do not warrant a place in the timetable. Student course selections in spring of 2024 and staffing allocations ultimately determine the availability of sections/courses. Administration and Guidance reserves the right to review course sections/numbers each semester and adjust accordingly. Once a timetable is built, students are not permitted to make changes to their course selection with the exception of adjusting for course failures or changes in post-secondary paths and requirements.

Leo Hayes High School
Introduction

This guide is designed to help you choose courses that will meet the New Brunswick High School Graduation requirements.

Homeroom teachers and school counselors will provide you with direction and information, and counsellors will assist you with the course planning and selection process. Students should take every opportunity to discuss course options and post-secondary and career plans with their parents, guardians, teachers and school counselors. We are here to help you, but ***it is ultimately up to the student and his/her/their parents or guardians to ensure courses are selected to meet post-secondary entrance requirements.***

General Information

Personalized Learning Educational Plan

Students who require an Adjusted Curriculum or Individual Personal Learning Plan (PLP) are eligible to have course content adjusted to meet their learning needs. The student's course selections should be done in consultation with the Resource Teacher, School Counselors and Parents.

Course Levels

All courses have a name and number. The first two digits indicate grade and the third digit indicates the level.

Open or "0" courses are offered to all at one level only;

ex: Entrepreneurship 110

Level 2 courses are academic/university/college preparatory.

ex: Music 112, Biology 122

Level 3 courses are general/college preparatory.

ex: English 123

Level 1 courses are enriched university preparatory.

ex: English 111, Physics 121

Some electives are open to grades 10, 11 and 12; read descriptions and pre-requisites carefully.

Prerequisites

Many courses have required or recommended prerequisites or co-requisites. Please read the course descriptions carefully prior to course selection. Students without the required prerequisites will not be allowed to enroll in the course. **See page 29 for a listing of courses requiring prerequisites.**

Prerequisite: A course that must have been successfully completed prior to enrolling in the course.

Co-requisite: A course that, if not previously completed, must be taken during the same semester as the course.

Course Fees and Applications:

Please note that some courses require additional supplies and/or payment of lab, studio or other fees. Some courses require applications **-due April 5th to the guidance department- See p. 29.**

Student Timetables:

Timetables are computer-generated to best match the maximum number of student requests and therefore courses fall by chance into either semester.

When all timetables are deemed ready and the school schedule and staffing are settled, timetables will be distributed for the upcoming school year to all students at the same time typically the first day of school.

We are unable to entertain requests for early access to your timetable.

Leo Hayes High School Special Programs

In addition to the range of compulsory and elective courses available to you, the following programs offer students the opportunity to enroll in courses that support their special interests and/or career goals.

Career and Transition Planning

A variety of elective courses are offered to support the career interests of students. In addition, specific interests may also be explored through on-the-job work placements in Cooperative Education 120 courses. These courses provide opportunities to gain work experience and develop workplace skills as part of your high school program. Workplace opportunities exist in many different areas. **Additionally, placements in trades related areas may be used as hours credited towards apprenticeship.**

**Two new career specific co-op programs are being offered now: Long-term Care Co-op and Introduction to Early Childhood 120 Co-op. See your school counselor for more information.

Challenge for Credit/ Fast Track Options

Students who have completed one of the following may qualify to earn up to **8 credit hours** credits toward graduation. Please see your **School Counsellor** for more details.

- 101/Fundamentals level Coaching Certificate (Competition or Instruction Stream)
- Cadet Level 4
- Duke of Edinburgh's Award Silver or Gold level
- High School Summer French Program at l'Université de Moncton
- Imagine NB, Girl Scouts Trailblazer Silver Award
- Immersion program of Université Sainte-Anne
- Junior Achievement "Be Entrepreneurial" Program Certificate
- Les Jeunes Chanteurs d'Acadie
- National Lifesaving Society Certificate (NLS)
- Scout Exploration Activity Award
- Shad Canada
- Université de Moncton - Explore Jeunesse Program
- Université de Moncton Junior-High School Program
- YMCA Summer Work Student Exchange (SWSE)
- YMCA Community Action Network (YCAN)
- YMCA Youth Exchanges Canada program (travel or virtual)

Fine Arts Certificate Program

This program, designed to reward both quantity and quality of artistic work, is an enrichment opportunity for students that are motivated, self-disciplined, and interested in the Arts. The F.A.C. will take approximately 2.5 years to complete. While the requirements are quite reasonable, it will take careful planning by the student to ensure success. The F.A.C. is designed to reward depth of work in one area of concentration. It also demands that applicants experience at least one additional discipline of artistic expression. Students who receive the LHHS F.A.C. will have been involved in both curricular and extra-curricular arts activities. Across the 3 years of grades 10, 11 and 12 students must complete three curricular courses in their area of study, 6 extra-curricular activities in the arts (three of which **MUST** be in their area of study), complete a self-evaluative paper and a portfolio to be reviewed by local artists in their corresponding discipline. If students are interested in earning the LHHS Fine Arts Certificate (FAC) they should consult a **Fine Arts teacher** for more information.

French Immersion Program

CERTIFICATE OF IMMERSION

This certificate is issued by Anglophone School District West and is offered to all students who have completed the requirements of the **French Immersion Program** through grade 12; 50% of courses in each of grades 9 and 10; 25% of grades 11 & 12 over the two years (five courses gr 11/12). A complete listing of LHHS' F.I. courses can be found on the Course Theme Index, pages 10-11.

CERTIFICATE OF PROFICIENCY

The certificate of Oral Proficiency is issued to **grade 12 students** either in the **Immersion or PIF program** and indicates a student's level of proficiency. This certificate is awarded by the Department of Education following an oral assessment by professional evaluators. The certificate is presented upon completion at the end of the semester. There is no cost for this assessment. Students who are enrolled in a grade 12 French course in grade 12 will automatically be eligible for the proficiency test.

*Other students interested in taking the OPI who do not meet the above criteria should contact their school counselor. They may qualify under "special circumstances."

Trades Course Option at FHS

This program provides the opportunity to enroll in two trades related courses per semester held at FHS in the afternoon while attending LHHS in the morning. Students must enroll in both courses. Transportation by bus from LHHS to FHS and return is expected and provided for students in this program. **NOTE: Enrolment is limited and competitive.** Priority will be given to students that can demonstrate a commitment to regular attendance and appropriate, respectful behaviours.



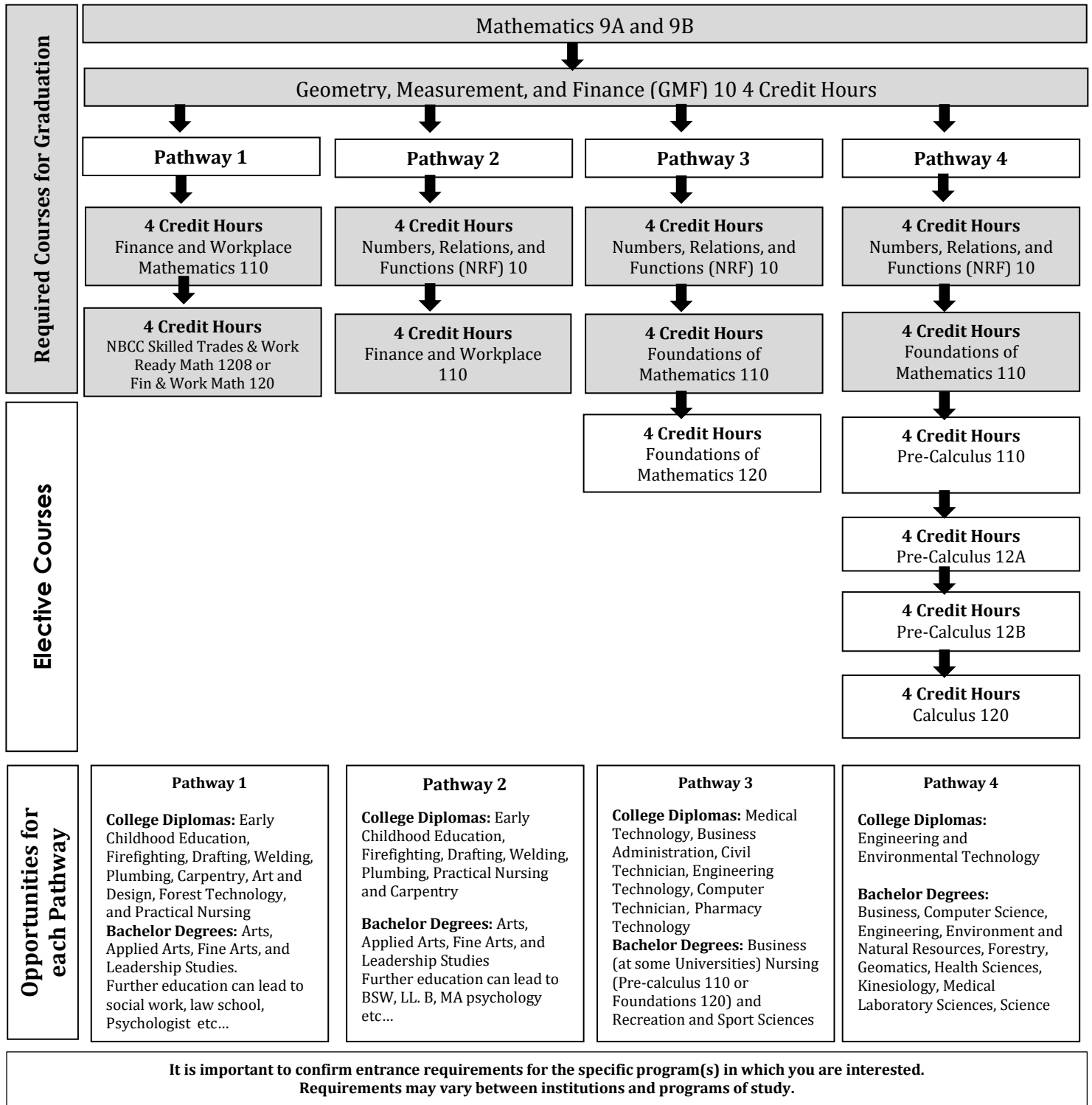
Not sure what career path you would like to follow? myBlueprint is an academic planner that offers assessments, search tools, and videos to help you explore possible career paths. Best of all, it is Canadian information. Most students would have used this program in grade 10 PDCP class, but if you don't have an account, follow these steps to set one up. You might want to book an appointment with your guidance counsellor about exploring your results and the questions that follow.

How to Create a New Account:

1. Visit [myBlueprint.ca/anglophone west](http://myBlueprint.ca/anglophone-west)
2. Click 'Sign Up'
3. Select Your School: Leo Hayes High School
4. Select 'Create Account'
5. Select 'Student'
6. What Grade Are You In: Select
7. Enter Education Number (the long number next to your name on your schedule)
8. Enter Birthdate
9. Select an email you use and remember. Select Password you will remember.
10. For assessments, click the 'Who Am I' tab on left side of the screen. There are several.

Leo Hayes High School Graduation Pathways for Mathematics

Each pathway is designed to provide students with the mathematical competencies and critical thinking skills they will need after high school. Students should select courses in the pathway that best fits their interests and plans for after high school. Each pathway provides students with a different focus on math concepts and skills. Students may choose to take additional mathematics courses beyond the graduation requirements to better prepare them for what they want to do following high school.



Leo Hayes High School
**New Brunswick High School Graduation Requirements for
Students Graduating in 2025**

In order to graduate, you must meet all of the following requirements:

- Complete the entire Grade 9-10 program.
- Pass the English Language Proficiency Assessment.
- Earn at least 72 credit hours in Grades 10-12, including compulsory courses listed below.
- **At least five of the courses must be at the grade 12 level including English 12.**
- Have no more than **two** local option courses out of the 72 credit hours.

7 Compulsory courses (must select and pass)

- English Language Arts Literary Text 11
- English Language Arts Informational Text 11
- Math – must pass **two** of (Numbers Relations and Functions 10 **and either** Fin and Workplace 110 **OR** Foundations 110) **OR** (Fin & Workplace 110 **and either** Fin & Work Math 120 **OR** NBCC Sk Trd Wrk Ready 120)
- 1 Science course (see list of options below)
- 1 Humanities course (see list of options below)
- 1 Fine Arts & Life Role Development course (see list of options below)
- English 12

***Notes- French Immersion students must successfully complete five of their grade 11/12 courses (over the two years) in French to obtain their FI certificate in grade 12.**

Humanities Options

Canadian History 122 or FI/FSL Canadian History 122, Modern History 11 or FI/FSL Modern History 11, Wabanaki studies 120 and World Issues 120.

Science Options

Automotive Electrical Systems 120, Biology, Chemistry, Human Physiology 110, Environmental Geoscience 110, Environmental Science 120, Introduction to Electronics 110, Robotics and Automated Technology 120 and Physics.

Fine Arts/Life Role Development

*Automotive Electrical Systems 120, Cooperative Education 120, Creative Arts 110, Culinary Technology 110/120, Dramatic arts 110/120, Early Childhood Coop 120, Electrical Wiring 110/120, Entrepreneurship 110, Fashion Technology & Design 110/120, FI/FSL Individual Family Wellness 120, Framing and Sheathing 110, Graphic art and Design 110, Growth, Goals & Grit 120, Housing & Interior Design 120, Individual & Family Wellness 120, Internal Combustion Engines 110, Introduction to Skilled Trades 110, Long-term Care Coop 120, Metals Fabrication (Welding) 110/120, Metals Processing 110, Mill and Cabinet 120, Music 112, Music 122, Nutrition for Healthy Living 120, Outdoor Education 110, Power Chain and Chassis 110, Residential Finish 120, Sport & Recreation Leadership 120, Tune-up and Emissions 120, Visual Arts 110/120, and Wellness through Physical Education 110

***Automotive Electrical Systems 120** – if used as a science credit, students must select a different Fine Arts/Life Role credit.

New Brunswick High School Graduation Requirements for Students Graduating in 2026 and Beyond

In order to graduate, you must meet all of the following requirements:

- A minimum of 100 Credit Hours.
 - Each course passed counts as 4 Credit Hours.
 - Complete compulsory credit-hours in each cluster in grades 10 through 12.
 - Pass the English Language Proficiency Assessment.
- *Courses cannot be counted in more than one cluster.

Courses that are required for graduation and therefore must be passed by all students are:

- English Language Arts 10 Foundational
- English Language Arts 11 Foundational
- English Language Arts 12
- Post Intensive French 10 **OR** FI Language Arts 10 **OR** Wolastoqey 10
- Civics **OR** FI Civics
- Geometry Measurement, and Finance 10 **OR** FI Geometry, Measurement and Finance 10

*** Students in French Immersion require 40 Credit Hours in French in grades 10 - 12 ***

Please refer to pages 8 & 9 for a complete list of courses offered in each cluster.

Leo Hayes High School

Cluster	Required Courses	Options
LANGUAGES & LITERACIES (24 CH)	<p>Grade 10 – English 10 Foundational **English 10 Extended PIF 10 or FILA 10 or Wolastoqey 10</p> <p>Grade 11 – English 111/112/113 Foundational</p> <p>Grade 12 – English 121/122/123</p> <p style="text-align: center;">** recommended for all</p>	<p>English Language Arts 11 Extended FI Language Arts 110 (Early or late) FI Language Arts 120 (Early or late) FSL Technique to Communication 110/120 Graphic Novels 120 Intro to Wolastoqey 110 Media Studies 120* Post Intensive French 110/120 Spanish 120 Writing 110</p>
HUMANITIES (8 CH)	<p>Grade 10 - Civics or FI Civics</p>	<p>Students must choose at least one course from the designated History Course List: Ancient and Medieval History 110 Canadian History 122 FI Modern History 112 FI/FSL Canadian History 122 Modern History 112 or 113 Wabanaki Studies 120 World Issues 120</p> <p>Optional Humanities Courses: Economics 120 Intro to Debate 110 Law 120 Political Science 120 Sociology 120</p>
MATHEMATICS (12 CH)	<p>Grade 10</p> <p>- Geometry, Measurement & Finance 10 or - FI Geometry, Measurement & Finance 10</p>	<p>Financial & Workplace Mathematics 110 Financial & Workplace Mathematics 120 Foundations of Mathematics 110 (FI/FSL) Foundations of Mathematics 120 NBCC Skilled Trades & Work Ready Math 120 Numbers Relations & Functions 10 (FI) Pre-calculus 110 (FI/FSL) Pre-Calculus 120A/B Calculus 120</p>
SCIENCE (8CH)	<p>Grade 10</p> <p>**Science for Sustainable Societies 10 or **FI/FSL Science for Sustainable Societies 10</p> <p>**Strongly recommended for all students</p>	<p>Auto Electrical Systems 120* Biology 111 or 112 Biology 121 or 122 Chemistry 111 or 112 Chemistry 121 or 122 Environmental Geoscience 110 Environmental Science 120 FI/FSL Biology 112 Human Physiology 110 Introduction to Electronics 110 Physics 111 or 112 Physics 121 or 122</p>

Leo Hayes High School

Cluster	Required	Options
Personalized Well-Being (20CH)	Creative Arts (4CH)	<p>Creative Arts 110 Digital Production 120* Dramatic Arts 110 Dramatic Arts 120 Fashion Technology and Design 110/120* Graphic Art & Design 110 Housing and Interior Design 120</p> <p>Indigenous & Wabanaki Arts 110 Media Studies 120* Music 10 Music 112 Visual Arts 10 Visual Arts 110 Visual Arts 120</p>
	Wellness & Physical Education (4CH)	<p>Dance 110 Early Childhood Development 120 FI/FSL Individual and Family Wellness 120 Human Services 110 Individual Family Wellness 120 Nutrition for Healthy Living 120 Outdoor Education 110</p> <p>Physical Education 10 Psychology 110 Psychology 120 Sport and Recreation Leadership 120 Wellness through Physical Education 110 Yoga 110</p>
	Career Connected (4CH)	<p>Career Occupational: Career Pathway Design 10 Coop 120 Entrepreneurship 110 Fashion Technology and Design 110/120*</p> <p>Information and Communication Technology: Computer Assisted Manufacturing 110 Computer Science 110 Computer Science 120</p> <p>Skilled Trades: Automotive Electrical Systems 120* Culinary Technology 110 / 120 Electrical Wiring 110 and/or 120 Framing and Sheathing 110 Internal Combustion Engines 110 Intro to Skilled Trades 110</p> <p>Goals, Growth, and Grit 120 Housing and Interior Design 120 Hospitality and Tourism 110 Marketing 120 Cybersecurity 120 Digital Production 120* Robotics and Automated Tech 120 Metals Fabrication/Welding 110 / 120 Metals Processing 110 Mill and Cabinet Work 120 Power Train and Chassis 110 Residential Finish 120 Tune-up and Emissions 120</p>
	Another (8CH)	<p>An additional 8 CH from any of the Personalized Wellbeing including: Creative Arts, Wellness & Physical Education, Career, Information Communication Technology, Occupational and Skilled Trades</p>
Core Cluster Electives	(8CH)	<p>An additional 8 CH from any of the core clusters including; Language and Literacies, Humanities, Mathematics, Science, Personalized Wellbeing.</p>
Other	(20CH)	<p>A minimum of 20 additional credit hours which may include elective courses from the core clusters, up to 8 credit hours from Challenge for Credit Courses (see p 3), 4 credit hours of independent study, and/or 8 credit hours for Locally Developed Courses.</p>

- Courses with an asterisk may be used to fulfill the requirements for no more than one cluster.

Leo Hayes High School

COURSES LISTED ALPHABETICALLY

Course	Page	Course	Page
Ancient and Medieval History 112	12	FI Language Arts 10 (Grade 3 or grade 6 entry)	18
Automotive Electrical Services 120	12	FI Language Arts 11 (grade 3 or grade 6 entry)	19
Biology 111	12	FI Language Arts 120 (Early or Late)	19
Biology 112	12	FI Modern History 112	22
Biology 121	12	FI Numbers, Relations & Functions 10	23
Biology 122	12	FI Science for Sustainable Societies 10	27
Calculus 120	12	FI/FSL Biology 112	12
Canadian History 122	13	FI/FSL Canadian History 122	13
Career Pathway Design 10	13	FI/FSL Foundations of Mathematics 110	19
Chemistry 111	13	FI/FSL Individual Family Wellness 120	21
Chemistry 112	13	FI/FSL Pre-Calculus 110	26
Chemistry 121	13	FSL Technique de Communication 110	19
Chemistry 122	13	FSL Technique de Communication 120	19
Civics	13	Financial and Workplace Math 110	19
Computer Assisted Manufacturing 110	14	Financial and Workplace Math 120	19
Computer Science 110	14	Foundations of Mathematics 110	19
Computer Science 120	14	Foundations of Mathematics 120	19
Cooperative Education 120	14	Framing & Sheathing 110	20
Creative Arts 110	15	Geometry Measurement and Finance 10	20
Culinary Technology 110	15	Graphic Arts & Design 110	20
Culinary Technology 120	15	Graphic Novels 120	20
Cybersecurity 120	15	Growth, Goals and Grit 120	20
Dance 110	15	Hospitality and Tourism 110	20
Digital Production 120	15	Housing and Design 120	20
Dramatic Arts 110	15	Human Physiology 110	20
Dramatic Arts 120	16	Human Services 110	21
Early Childhood Development 120	16	Indigenous Wabanaki Art 110	28
Economics 120	16	Individual Family Wellness 120	21
Electrical Wiring 110	16	Internal Comb Engines 110 (NA 2024-25)	21
Electrical Wiring 120	16	Intro to Debate 110	28
English Language Arts 10 Extended	16	Intro to Early Childhood Coop 120	14
English Language Arts 10 Foundational	16	Intro to Electronics 110	21
English Language Arts 111 Extended	16	Intro to Skilled Trades 110	21
English Language Arts 111 Foundational	17	Intro Wolastoqey 10	28
English Language Arts 112 Extended	17	Intro Wolastoqey 110	28
English Language Arts 112 Foundational	17	Law 120	21
English Language Arts 113 Extended	17	Long-Term Care Coop 120	14
English Language Arts 113 Foundational	17	Marketing 120	21
English Language Arts 121	17	Media Studies 120	21
English Language Arts 122	17	Metals Fabrication/Welding 110	22
English Language Arts 123	18	Metals Fabrication/Welding Block 110/120	22
Entrepreneurship 110	18	Metals Processing 110 (NA 2024-25)	22
Environmental Geoscience 110	18	Mill and Cabinet Work 120	22
Environmental Science 120	18	Modern History 111, 112, 113	22
Fashion Technology 110	18	Music 10	22
Fashion Technology 120	18	Music 112 (Guitar)	22
FI Civics	13	Music 112 (Instrumental)	23
FI Geometry Measurements & Finance 10	20	Music 112 (Keyboarding)	23

Leo Hayes High School

NBCC Skilled Trades & Work Ready Math 1208	23	Science for Sustainable Societies 10	26
Numbers Relations & Functions 10	23	Sociology 120	27
Nutrition for Healthy Living 120	23	Spanish 120	27
Outdoor Education 110	23	Sport & Recreation Leadership 120	27
Personal Interest 1	23	Tune Up and Emissions 120 (N/A 2024-25)	27
Personal Interest 1 and 2	24	Visual Arts 10	27
Physical Education 10	24	Visual Arts 110	27
Physics 111	24	Visual Arts 120	27
Physics 112	24	Wabanaki Studies 120	27
Physics 121	25	Wellness through Physical Education 110	27
Physics 122	25	World Issues 120	28
Political Science 120	25	Writing 110	28
Post Intensive French 10	25	Yoga 110	28
Post Intensive French 110	25		
Post Intensive French 120	25	FHS Courses	
Power Train and Chassis 120	25	Semester 1	
Pre-Calculus 110	26	Residential Finish and Insulation 120 and	26
Pre-Calculus 120 A	26	Framing and Sheathing 110	20
Pre-Calculus 120 B	26		
Psychology 110	26	Semester 2	
Psychology 120	26	Auto Electric 120 and	12
Residential Finish and Insulation 120	26	Power Train and Chassis 110	26
Robotics & Automated Technology 120	26		

Also available on our website: <https://leohayeshigh.nbed.ca>

ANCIENT AND MEDIEVAL HISTORY 112

Ancient and medieval histories have an influence on popular culture, public conversation, and academic curricula. The roots of the present lie deep in the past. An understanding of ancient and medieval societies will not only give students the ability to think critically about that influence and about many other issues but also foster the development of historical thinking. Thinking about how we are different from past societies and how we continue to ask many of the same questions helps us to understand the human condition more broadly. What has changed, and what has stayed the same? Does change always mean progress? Students will answer these questions while exploring stories from Ancient Egypt and China to local Wolastoqey histories.

AUTOMOTIVE ELECTRICAL SERVICES 120

This course introduces the student to the theory and operation of automobile electrical systems. Students will study the principles of electricity that includes electron theory, magnetism, and electrical systems and will then progress from the study of individual components such as coils, distributors, and alternators to the study of systems as a whole. Charging, ignition, and starting systems will be the main focus. This course also includes an introduction to engine management systems, scanning, and diagnostics. This course may be used as a science credit. **Power Train and Chassis must also be selected if you choose this course. Lab fee \$5.**

BIOLOGY 111

Recommended Prerequisite: Science 10 (85%)

Biology 111 is an advanced course that includes the following topics: microscopy, cellular biology, cellular respiration, principles of taxonomy, microorganisms and kingdoms of life. These topics will be covered in greater depth than in Biology 112. Teaching methods will combine lectures, independent and group research projects, laboratories (including dissections), guest speakers and field trips. An average above 85% in Science 10 is highly recommended for students taking this course.

Lab fee \$5.

BIOLOGY 112

FI/FSL BIOLOGY 112

Recommended Prerequisite: Science 10

Biology 11 explores the diversity among living things from viruses and bacteria to vertebrate zoology. Students understand the cell as the basic unit of life and the diversity of organisms that are organized into the various kingdoms of life. Students investigate the impact of biology and technology on society and the impact of human activities on the natural world. Students will participate in a wide variety of hands-on learning opportunities to help them better understand a wide variety of biological concepts.

Lab fee \$5.

BIOLOGY 121

Recommended Prerequisite: Science 10 - 85%

This course is targeted toward students who have a strong science background and are interested in post-secondary studies in medicine, forestry, biotechnology and genomics. The program will focus on genetics, human reproduction, DNA replication, protein synthesis, biochemistry, ecological functions and the physiology of human sight and hearing. Students will present seminars, conduct lab experiments, take field trips and perform library and internet research.

Lab fee \$5.

BIOLOGY 122

Recommended Prerequisite Science 10

This course is designed for students who plan to proceed to university or community college. Topics including Human reproduction, genetic, inheritance patterns, DNA replication, protein synthesis, cellular function and population dynamics will be investigated by students taking this course, in lecture and lab sessions.

Lab fee \$5.

CALCULUS 120

Pre-requisites: Pre-Calculus 12A & 12B

This course will extend students' knowledge in the area of Calculus by studying the following topics: limits (continued), derivatives, applications of derivatives, curve sketching, and an introduction to anti-derivatives. This course

is recommended for higher ability math students (entering university Math/Science based fields of study). At the completion of this course students will be prepared for and have the option to write the "Calculus Challenge Exam" at UNB. Please visit www.math.unb.ca for more details. This course will only be offered in semester two.

CANADIAN HISTORY 122

FI/FSL CANADIAN HISTORY 122

How did Canada come to be the country it is today? What is myth? What is reality? Who decides the Canadian story? This course is a deep dive into Canadian history covering a range of eras and topics from Indigenous cultures thousands of years ago to the modern debates around government and media. Learn to think about our country like a historian. This course can be counted as your required Social Studies credit.

CAREER PATHWAY DESIGN 10

Career Pathway Design 10 encourages students to engage in informed career pathway planning through self-awareness, exploration of opportunities and engagement in authentic career connected experiences. Throughout the course, students will develop the skills and competencies to design personalized career pathways that will be used throughout high school and life after graduation. Students will complete a passion project for this course.

CHEMISTRY 111

Recommended Prerequisites: 85% or above in science 10 and Math 10(GMF/NRF)

Recommended Corequisite: Foundations 110

Chemistry 111 is designed for students who may be pursuing science, engineering, nursing, or a related field at the post-secondary level. It is the first of two chemistry courses which exposes students to the development of atomic theory, the classification and structure of matter, elements and compounds, bonding, molecular shape, the mole, chemical reactions and stoichiometry. Chemistry 111 will cover more topics than Chemistry 112, therefore a more accelerated learning pace can be expected. In addition to several labs (including a field trip to UNB), students will be expected to do an enrichment project.

Lab fee \$5.

CHEMISTRY 112

Recommended Prerequisite: Science 10;GMF Math 10 and NRF 10

Recommended Corequisite: Foundations 110

Chemistry 112 is designed for students who may be pursuing science, engineering or a related field at the post-secondary level. It is the first of two chemistry courses which exposes students to the development of atomic theory, the classification and structure of matter, elements and compounds, bonding, molecular shape, the mole, chemical reactions and stoichiometry. Students will have the opportunity to perform lab experiments to support their understanding of these concepts.

Lab fee \$5.

CHEMISTRY 121

Prerequisites: 85% or above in Chemistry 111

Recommended Prerequisite: Foundations 110

Chemistry 121 is designed for students who are interested in pursuing science, engineering, nursing or a related field at the post-secondary level. Chemistry 121 will cover more topics than Chemistry 122, therefore an accelerated learning pace can be expected. Previous concepts from Chemistry 11 will be applied to new topics including thermochemistry, kinetics & equilibrium, acids & bases and organic chemistry. In addition to several lab reports, students will be expected to do an individual enrichment project.

Lab fee \$5.

CHEMISTRY 122

Prerequisite: Chemistry 112/1

Recommended Prerequisite: Foundations 110

Chemistry 122 is designed for students who are interested in pursuing science, engineering, nursing or a related field at the post-secondary level. Chemistry 11 is a required prerequisite as previous concepts will be applied to new topics including thermochemistry, kinetics & equilibrium, acids & bases and organic chemistry. Students will have the opportunity to perform lab experiments to support their understanding of these concepts. **Lab fee \$5.**

CIVICS or FI CIVICS

By the end of this course, students will be able to talk about personal rights and responsibilities and how they interact with government, policy, and each other. They will be able to talk about various

political ideologies and forms of power as well as how those can be used by governments, organizations, and individuals. They will be able to talk about government power and how the individuals and groups can help shape decisions. Students can use their civic skills to address issues that impact them and their communities.

COMPUTER ASSISTED MANUFACTURING 110

In this introductory course students will learn how to use TinkerCad and Adobe Illustrator to design and then manufacture their own projects using a 3D printer, Laser engraver/cutter or a CNC machine. **Lab Fee: \$10**

COMPUTER SCIENCE 110

Discover the exciting landscapes of Java and Python in Computer Science 110, where students delve into two of today's most vital programming languages. Tailored for learners of all levels, this course offers a solid grounding in coding fundamentals. From novices seeking to explore programming's vast potential to seasoned enthusiasts aiming to refine their skills, Computer Science 110 provides a welcoming environment for all. Unleash your creativity, problem-solving abilities, and innovation as you embark on a thrilling journey through the boundless possibilities of programming. Choose Computer Science 110 and start shaping the future through code today!



COMPUTER SCIENCE 120

Recommended Prerequisite:
Computer Sci.110



Explore the depths of Computer Science 120, a dynamic course that delves into advanced Java programming and opens the door to specialized areas within the vast field of computer science. Students immerse themselves in advanced Java topics, including Object-Oriented Programming (OOP) and recursion, while also discovering the diverse realms of data analysis, artificial intelligence (AI), cybersecurity, and more. Whether aspiring to decipher complex datasets, craft intelligent systems, or safeguard digital domains, Computer Science 120 provides an unparalleled opportunity for students to pursue their passions and hone their skills in the ever-evolving world of technology. Discover your potential and chart your course to success with Computer Science 120!

CO-OPERATIVE EDUCATION 120 or FI CO-OPERATIVE EDUCATION 120

Cooperative Education will allow you to explore your career interest through an extensive workplace component during which you will learn more about your career field and the skills and learning required for success. Co-Op will help you to formulate more specific learning and career goals. Trades related placement hours can be credited towards Apprenticeship Certification. Due to the out-of-school workplace component of this course, an interview process is required that will consider teacher recommendations, attendance patterns, commitment to learning, the ability to represent the school in a mature and responsible manner and **your own access to transportation to and from the workplace.** *Students may select either a 3-period morning coop or a 2-period afternoon coop. **Enrolment is limited.***

COOP 120 (INTRO TO EARLY CHILDHOOD)

Early Childhood Coop is a two or three-period coop program where you work in a licensed childcare centre and complete the Early Childhood 90-hour online course. You will complete the coop program as normal, but you will also spend time working with a childcare expert to complete the online part of the program. If successful, you will earn the **Early Childhood Certificate** that shows you are ready to work in any licensed childcare centre in the province. Transportation is required. *Enrolment is limited.* Only students seriously planning a career working in a day care should apply.

COOP 120 (LONG TERM CARE)

Long-term Care Coop is a three-period coop program at a licensed long-term care facility with seniors and other individuals needing long-term care. You will spend the morning at a care facility near your school and earn two credits in Co-op 120 and one credit in **Health Care 110**. You will also receive "**employment ready recognition**" from the care facility. An excellent opportunity for students interested in Resident Assistant or Personal Support Worker careers. *Enrollment is limited.*

CREATIVE ARTS 110

Art is so much more than a picture on the wall! Art is music, sculpture, theater, dance, painting, poetry, and more. No art experience is necessary for this elective course. You will have many opportunities to discuss and make art. You will sharpen your critical thinking skills, and learn to discuss your likes, dislikes, and opinions of art in an informed way. Learn how the arts are connected to and contribute to our everyday lives, our communities, and our cultures. Come to this class with a positive attitude and a willingness to try new things. **Lab fee: \$10**

CULINARY TECHNOLOGY 110

Culinary Technology 110 is an entry level hands-on food service training course designed for students who may be considering a career in the food service industry. Culinary skill sets include: industry organization, standards, safety and sanitation, use of tools and equipment, and food preparation. Students will study the theory of each skill and then practice those skills under supervised lab activities. The activities include preparation of the following foods- quick breads, yeast bread and rolls, cakes and cookies, pies and pastry, and beverages. Catering events are also part of this course and are completed outside of class time.

Lab fee: \$25.

CULINARY TECHNOLOGY 120

Prerequisite: Culinary Technology 110

This course continues to develop the skills learned in Culinary Technology 110. Topics of study include food preparation-soups, grilling, broiling, sandwiches, salads, salad dressing, fruits, vegetables; job search skills; large equipment operation and food borne illnesses. This course will require students to participate in school-based catering opportunities such as "Meals to Go" and other events outside of class time during noon hours and evenings. **Enrolment is limited.**

Lab fee: \$25.

CYBERSECURITY 120

The Cybersecurity 120 (CYBER120) course will inspire students through the experiential learning of the fundamentals and possibilities of cybersecurity. In CYBER120, students will be actively engaged in the design,



development and evaluation of defensive cybersecurity projects, including awareness, concepts and challenges. The intent of this program of study is to have students discussing real-world case studies and learning in hands-on activities from day one, while maintaining a high level of engagement throughout the course through a commitment to problem-based and project-based learning.

DANCE 110

Can't sit still when you hear a great song? Want to improve your health and your mood? Have fun and express yourself through the art of dance! In this course you will build your sense of rhythm and coordination, while getting in touch with your creative side. Learn the basics of Hip Hop, Jazz, Tap, Contemporary, and Ballet. Explore the role of dance throughout history, create your own choreography, learn about dance careers, technical skills, movement, and performance. This course is appropriate for students with and without previous dance experience.

DIGITAL PRODUCTION 120

Digital Media can be defined as information that can be created, viewed, organized, distributed, modified and preserved using computers. If you are interested in Digital Media, creating web sites, and working with digital audio, Digital Productions 120 can offer you the skills you need to create different digital media. This class is a skills-based course designed for those who are self-directed and motivated to learn more about digital media as it relates to Digital Media. No prerequisite required. This course is also an area of concentration credit for the FIT certificate (Focus on Information Technology Program).

DRAMATIC ARTS 110

Are you interested in acting? Dramatic Arts 110 is a performance class where you get the opportunity learn the skills of acting. You will be shown a wide range of dramatic styles and get a chance to perform in scenes, short skits, monologues and one act plays. In addition to acting skills, you will develop more self-confidence as you step out of your comfort zone in a fun and accepting class environment. This course is highly participatory and requires excellent attendance.

Leo Hayes High School

DRAMATIC ARTS 120

Take your acting further! This course builds on Dramatic Arts 110 with an enhanced level of theatrical experience. You will be expected to have more involvement and ownership of acting choices. You will work individually, independently, in small groups, and in larger ensembles to create, analyze, and perform scenes, monologues, physical theatre and one act plays. Successful completion of Dramatic Arts 110 is highly encouraged, but not required, especially if you have acting experience in extra-curricular acting studios. This course is highly participatory and requires excellent attendance.

EARLY CHILDHOOD DEVELOPMENT 120

This course explores the early years of childhood development. How does a baby develop in the womb? How do children learn? What support and care do children need? It is an in-depth theory course designed for students who have an interest in continuing study in fields such as childhood education, nursing, child psychology or social work. Topics covered: heredity, conception, prenatal developments, pregnancy and childbirth, child growth and development. Mandatory component: Extended observation of a young child. The student is responsible for choosing the child to observe and study outside of regular class time.

ECONOMICS 120

Economics 120 provides a basic understanding of our economic system and how it works. The role of Canada's major economic institutions and how they interact is examined. It is designed to develop an understanding of the concepts and techniques needed in making economic decisions and to develop an awareness of the major economic problems and issues of the day.

ELECTRICAL WIRING 110 (RESIDENTIAL)

Have you ever wondered why people say, "Don't touch that wire!"? Find the answer to that question and more as we design, install, test, and troubleshoot residential electrical systems! Using industry-standard hand and power tools, you will interpret electrical drawings to install electrical systems compliant with the 2018 Canadian Electrical Code. Open to any grades 11 and 12 and especially recommended to anyone pursuing a

pathway into skilled trades. Course hours count towards NBTAP. **Lab fee \$10.**

ELECTRICAL WIRING 120 (COMMERCIAL)

Prerequisite: Electrical Wiring 110

Do you want to pull a fire alarm pull station? Come to Electrical Wiring 120 and do it without getting in trouble! Imagine Electrical Wiring 110, but the wires and tools are bigger, and the structures are all steel. If a career as a Construction or Industrial Electrician after high school appeals to you, come get your hands dirty down in the D Wing! Open to those who passed Electrical Wiring 110 and especially recommended to anyone pursuing a pathway into skilled trades. Course hours count towards NBTAP. **Lab fee \$10.**

ENGLISH LANGUAGE ARTS 10 EXTENDED

This is an elective one semester course worth 4 credit hours recommended to all grade 10 students. It is designed to extend a student's English Language Arts learning based on their interests, needs, and strengths through thematic exploration of a variety of text forms, genres, and authors. Grade 10 themes include: relationships, bias and stereotypes, environment, media consumption, mental fitness, identity, good vs. evil, and First nations culture and history.

ENGLISH LANGUAGE ARTS 10 FOUNDATIONAL

Students are expected to listen, view, read, and discuss increasingly complex information and literary texts representing a variety of voices for enjoyment, learning and personal understanding. There will be a focus on specific strategies to meet their learning needs while interacting, reading, and representing. Lessons are designed to allow for differentiation and support, so all learners have access to equitable learning experiences.

ENGLISH LANGUAGE ARTS 111 EXTENDED

This advanced level course provides an enriching and structured journey for students seeking a deeper understanding of literacy. Designed for students who can meet the challenges of an accelerated pace and broader scope than the university prep course (112), students will create and respond to a diverse range of texts centered around central themes. Immerse yourself in an advanced exploration that not only sharpens essential reading and representation skills but

Leo Hayes High School

also fosters a love for literature through focused and enriched topics. Student independence is required to succeed in this course.

ENGLISH LANG ARTS 111 FOUNDATIONAL

Prerequisite: English 10 Foundational with 85%

This course is tailored for students who crave further enrichment, and can meet the challenges of an accelerated pace and broader scope than the university prep course (112); providing a comprehensive exploration of communication skills, advanced literary analysis, and creative expression. Students will engage in advanced discussions, critical evaluations, and creative projects, fostering a love for languages while honing their abilities to think critically and express themselves with precision. Student independence is required to succeed in this course.

ENGLISH LANGUAGE ARTS 112 EXTENDED

Prepare for university with this semester-long exploration that emphasizes a focused and structured inquiry into specific aspects of literacy, guiding students to concentrate on essential skills and strategies through the use of themes. The course not only prepares students for the academic challenges of university but also encourages a sophisticated understanding of literature, critical inquiry, and effective communication.

ENGLISH LANG ARTS 112 FOUNDATIONAL

Prerequisite: English 10 (Foundational)

For students preparing for university, this course explores the intricacies of language, literature, and effective communication as students build essential skills for success in post-secondary. Engage in thought-provoking discussions, literary analysis, and writing exercises that will enhance your ability to access information, make connections, and form well-informed judgments. Elevate your academic proficiency and set the foundation for a successful post-secondary experience.

ENGLISH LANGUAGE ARTS 113 EXTENDED

This course equips students with practical reading and representation skills essential for effective communication in various contexts, whether in the world of work or all public and private college

settings. Immerse yourself in a practical and focused thematic literacy journey, preparing you for success in both real-world communication and future academic pursuits in college or trade schools.

ENGLISH LANG ARTS 113 FOUNDATIONAL

Prerequisite: English 10 (FOUNDATIONAL)

This course is designed to help students develop the ability to communicate confidently in various contexts, whether in the world of work or all public and private college settings. With a strong emphasis on real-world applications, this course will empower you to make meaningful connections, synthesize information, and communicate in ways that are relevant to your future endeavors.

ENGLISH LANG ARTS 121

Prerequisites: Eng. 111 (Lit Text & Info Text)

This comprehensive semester-long course is for students seeking an advanced and nuanced understanding of language, literature, and communication. Designed for students who can meet the challenges of an accelerated pace and broader scope than the university prep course (122); with an emphasis on critical analysis. Students will delve into sophisticated literary works, engage in advanced discussions, and undertake creative projects that showcase a higher level of complexity and insight. This course challenges students to synthesize information, articulate profound connections, and demonstrate a heightened level of creative thinking. Student independence is required to succeed in this course.

ENGLISH LANG ARTS 122

Prerequisites: Eng. 11 (Lit Text & Info Text)

Prepare for the rigors of university-level studies with an opportunity to demonstrate a higher level of academic inquiry and proficiency. The course challenges you to demonstrate a sophisticated understanding of language and literature, preparing you to excel in university-level academic environments. With an emphasis on research, sophisticated composition, and advanced communication, this course sets the stage for academic success at the highest level.

Leo Hayes High School

ENGLISH LANG ARTS 123

Prerequisites: Eng. 11 (Lit Text & Info Text)

This comprehensive semester focuses on demonstrating communication proficiency in real-world contexts, whether in the world of work or all public and private college settings. From effective oral communication to polished written expression, this course guides students in demonstrating an ability to decode information, make meaningful connections, and synthesize ideas. Equip yourself with the communication skills needed to excel in your future professional endeavors and academic pursuits.

ENTREPRENEURSHIP 110

This course is designed for students interested in developing the skills essential for starting a small business or pursuing careers in marketing, business or finance. Through a combination of classroom theory, group tasks, and individual work, students will develop their own comprehensive business plan, based on an original idea.

ENVIRONMENTAL GEOSCIENCE 110

Recommended prerequisite: Science 10

This course is designed to appeal to a wide range of learners, including students for whom this will serve to fulfill their science graduation requirement. "A Portrait of a Planet" involves students in an examination of the current state of planet Earth. Students will determine how the Earth came to be the way it is today and look at the long-term future of the planet and its passengers. The course is particularly recommended to students who are interested in the scientific fields of astronomy, oceanography, geology, meteorology, mapping, or urban and rural planning. The course also presents an introduction to skills and methods that are basic to further study of survey engineering. **Lab fee \$5.**

ENVIRONMENTAL SCIENCE 120

Recommended prerequisite: Science 10

The objective of this course is for students to develop the knowledge base and skills for investigating and analyzing environmental issues (local and global) and for communicating their knowledge and analysis to others. Students will investigate population growth and resource limitations, ecology of natural systems, human

impacts on the natural world, historical and current perspectives of the environment, and other related topics. Each student will research a current environmental issue, explore current solutions to environmental problems, and in groups, share their findings with the class. Students will also choose from an extensive list, a few projects that suit their interest (i.e., Outdoor activities, art, research, photography, etc.), with the aim of increasing their appreciation/respect/understanding of the environment.

Lab fee: \$5.

FASHION TECHNOLOGY AND DESIGN 110:

Students will examine the world of textiles, their production process, and explore various fibers and fabrics. Students will reflect on their own clothing needs and choices, examine the environmental impact of those choices, and hypothesize potential solutions for improvement. Students will learn to follow commercial patterns and apply current construction techniques. Fashion Technology and Design 110 is primarily skills based and project based.

Lab Fee: \$20 plus cost of project supplies.

FASHION TECHNOLOGY AND DESIGN 120:

Prerequisite: Fashion Design 110

This course is designed to give students the opportunity to create, learn, and explore in the field of fashion design. In addition to theory, students will work hands on with a variety of technologies to design and create their own mini collection including a basic accessory. Students will develop sketching techniques to create fashion illustrations, learn the basics of pattern drafting, put together a design portfolio, and learn about fashion promoting and marketing.

Lab Fee: \$20 plus cost of project supplies.

FI LANGUAGE ARTS 10

This course is specifically designed for grade 10 French Immersion students to further enhance and maintain their linguistics skills in the French language. Students will develop their proficiency in French through a variety of engaging activities, including meaningful conversation, analyzing authentic texts, composing written pieces, and listening to a wide range of audio materials. This course aims to evolve the proficiency level of

Leo Hayes High School

students while deepening their understanding of the Francophone culture.

FI LANGUAGE ARTS 110 (Grade 3 or 6 entry)

French immersion students will continue to develop their French language skills in this course, through a variety of reading, writing, listening, speaking and social activities. Students will explore oral, regional & poetic language, present a debate, and improve their linguistic abilities and increase cultural understanding of and their place in the Francophone world.

FI LANGUAGE ARTS 120 (EARLY OR LATE)

French immersion students will continue to develop their French language skills in this course. French literature will be used to expand communication and reflection skills in reading and writing with particular emphasis on oral language skills. Students will develop critical thinking and social interaction skills necessary in our fast-changing society with short stories & french novels. They will continue to be exposed to cultural similarities & differences to be able to understand others better and interact as well-rounded citizens of the world. Students in this course will have the opportunity to participate in the French Oral Proficiency Interview and will receive a certificate from the Province of New Brunswick indicating their proficiency level.

FSL TECHNIQUES DE COMMUNICATION 110

This course is for students wishing to continue to develop and maintain their French language skills through a variety of oral interaction activities, group and/or individual presentations, writing activities, and oral comprehension activities. Outcomes are intended to better prepare students for their grade 12 Oral Proficiency Interview. 70% of the course is speaking French. Students should be prepared to converse daily in class to improve their French communication techniques.

FSL TECHNIQUES DE COMMUNICATION 120

Develop and enhance French oral communication skills through a variety of oral interaction activities and presentations. The use of appropriate language conventions in both written and spoken French will be emphasized. Students in this course will have the opportunity to participate in the French Oral Proficiency Interview and will receive a certificate from the

Province of New Brunswick indicating their proficiency level.

FINANCIAL & WORKPLACE MATH 110

Prerequisite: GMF 10

This course is the first course in the Financial and Workplace pathway which is designed for entry into Bachelor of Arts, many college courses, the majority of trades and for direct entry into the work force. Topics include financial mathematics, algebra, geometry, measurement, number, and statistics.

FINANCIAL & WORKPLACE MATH 120

Prerequisite: Fin & Work Math 110 OR Foundations of Math 110.

This is the second of two courses in the Financial and Workplace pathway designed for entry into post-secondary trades and technical programs or for direct entry into the work force. Topics include measuring, sine and cosine laws, properties of polygons, transformations of 2-D and 3-D shapes, small business finance, linear relationships, data interpretation, and probability.

FOUNDATIONS OF MATHEMATICS 110

FI/FSL FOUNDATIONS OF MATHEMATICS 110

Prerequisite: NRF 10 and GMF 10

This course is the first course in the Foundations pathway and the prerequisite for the Pre-Calculus pathway. The Foundations pathway is designed for entry into non-math-based degrees and technical courses at the college level. Students must pass this course to enter into the Pre-Calculus courses and/or to take Foundations 12. Topics include financial mathematics, geometry, measurement, number, logical reasoning, and relations and functions. Students entering this pathway should have a 70% or higher in Numbers, Relations and Functions 10.

FOUNDATIONS OF MATHEMATICS 120

Prerequisite: Foundations of Math 110

This course is the second course in the Foundations pathway. The Foundations pathway is designed for entry into non-math-based degrees and technical courses at the college level. Topics include statistics, probability, relations and functions.

Leo Hayes High School

FRAMING AND SHEATHING 110

Students in this course will participate in the planning and construction of wooden structures in a large, well-equipped shop. Students will learn the safe operation of carpentry tools and equipment. Emphasis will be placed on the interpretation of the National Building Code, blueprint reading, estimating and material layout. This course will be of interest to students exploring career opportunities in the building construction industry. **Residential Finish and Insulation 120 must also be chosen.**

Lab Fee: \$10

GEOMETRY MEASUREMENT & FINANCE 10

FI GEOMETRY MEASUREMENT & FINANCE 10

GMF 10 is a required course for all high school students. Topics covered in this course are practical and applicable to everyday life. The Geometry Outcomes students will explore are: the Pythagorean theorem, Trigonometry and Angle Theorems. The Measurement Outcomes students will explore are: the metric and imperial systems of measurement and surface area and volume applications. The Finance Outcomes students will explore are: calculations and applications for sales tax, unit price, gross/net pay and simple/compound interest.

GRAPHIC ARTS AND DESIGN 110

Prerequisite: Visual Arts 10

Students will explore skills, processes and knowledge involved in graphic art and design in order to create original art and design products such as logos, illustrations, and more. Images will be created by hand and/or computer. A strong interest in Art and a high level of dedication to artwork is required for this course.

Lab fee: \$10

GRAPHIC NOVELS 120

Graphic novels have become a mainstream form of writing. This course will explore the genre and what makes it so unique. You will learn various writing techniques specific to graphic novels, literacy skills unique to graphic novels, as well as artistic ways to convey a message. Throughout the term, you will read a variety of graphic novels and explore their significance. You will also be required to write/illustrate your own graphic novel. While art skills are not a requirement, an interest in drawing/art will help. If you are a fan

of the genre or are interested in learning more about graphic novels, this course is for you.

GROWTH, GOALS & GRIT 120

This course will help students develop skills in three main areas: positive and productive mindsets and behaviours, organizational patterns, as well as functional and critical literacy. Within the learning expectations of the course, specific success skills, strategies, and practices will be explored. Students will be supported to transfer these skills, strategies and practices to authentic life situations and circumstances, including their other courses. Students will also learn how these support their plans for life after high school.

HOSPITALITY AND TOURISM 110

Looking for a fun, interesting, and dynamic career option? Hospitality & Tourism 110 may be for you! In this introductory course, you will learn about one of the fastest growing industries in North America and its many social and economic benefits. You will also learn about the abundance of world-wide job opportunities available in Tourism and how you can pursue them. Some of the potential career choices are chef, pilot, flight attendant, ski/snow board instructor, travel agent, hotel manager, party planner, and the list goes on. Come discover the world of Tourism and all its possibilities.

HOUSING AND DESIGN 120

Housing and Design is intended for students who are interested in learning more about the housing environment in the past, present and future. You will learn about housing decisions as this may account for the single largest expenditure for the majority of people. This course also requires creativity and individuality in designing a living environment with a focus on interior décor.

Lab fee \$10.

HUMAN PHYSIOLOGY 110

Prerequisite: Science 10

This course is designed to appeal to a wide range of learners, including students for whom this will serve to fulfill their science graduation requirement. The goal of this course is to build an understanding of the physiology of the human body. Throughout the course students will build their scientific literacy skills as they learn to

navigate the extensive volumes of information on human health now available - in particular on the Internet. By the end of the course students will have developed a holistic personal wellness plan, demonstrating their understanding of overall health, human physiology, and the effect of disease and lifestyle choices.

Lab fee \$5.

HUMAN SERVICES 110

The purpose of this course is to introduce learners to the skills and potential career pathways related to the human services field. Throughout the course, learners will interact with the professional roles and responsibilities associated with human services pathways, which includes working with populations as diverse as youth care to the elderly. This course includes an introduction to career-specific responsibilities to help support learners in making personal and career decisions. If you've got a heart for helping others and passion for people and community, a course in Human Services may be for you!

INDIVIDUAL AND FAMILY Wellness 120

FI/FSL INDIVIDUAL AND FAMILY Wellness 120

The main theme of this course is the individual in relation to the family, friends and society. Students will explore their own development through a study of themselves and their relationships with others. Topics covered include personal development, relationships and the importance of family. Students will learn strategies on how to cope with the ever-changing issues that impact our lives. This course is an excellent introduction to further studies in psychology, sociology, teaching, social work, and family life education. Student projects are an integral part of this course.

INTERNAL COMBUSTION ENGINES 110

Not offered in 2024-25; Available 25-26

This course content includes the theory of operation and function of the engine systems. Students learn the safe operation of tools and equipment used to disassemble, diagnose, service and repair engine components and systems. Emphasis is placed on the development of skills essential for persons entering the automotive, aircraft or marine service industries. **Tune Up and Emissions 120 must also be chosen. Lab fee: \$5**

INTRO TO ELECTRONICS 110

Recommended Prerequisite: GMF & NRF 10

Resistors, transformers, batteries, capacitors, inductors, and basic circuit analysis...sound interesting? Students with a career objective in the technical trades, an interest in this technology as a hobby, or for those who plan to pursue a career in engineering will benefit from this course. It is also recognized as an entrance credit for Engineering Degree Programs at UNB.

INTRO TO SKILLED TRADES 110

Whether you are a trade's-oriented person or academic, this is a good course to take! You will receive hands-on training and have a chance to learn valuable life skills. You will learn how to competently use various woodworking hand tools, as well as stationery and power tools. The following topics will be covered in the semester: safety, machine instruction, wood working, design project, reading Blueprints. Over the semester, you will learn a variety of skills from dressing rough lumber to size to applying a finish.

Lab fee \$50.

LAW 120

Who writes the law? Who enforces the law? How does the law impact my life? What are my rights? Answer these questions and more in this intro to Law course. While the course does have a theoretical side, it is designed to be highly interactive. Students will be encouraged to join in discussion and debate and share ideas freely with the class.

MARKETING 120

This course introduces students to marketing function and activities that occur within the Canadian marketplace and how it affects us as consumers. Students will also be able to explore and be exposed to potential career opportunities. Areas of focus include: evolution of marketing, the marketing mix, the Canadian Code of Advertising standards, market research, as well as advertising techniques and strategies. Suggested prerequisite: English 112

MEDIA STUDIES 120

Embark on a journey through the heart of the modern world— Media Studies 120. Explore the power and pitfalls of media in a course designed to

Leo Hayes High School

unveil the secrets of consumption and creation. In this class, you will be both creator and consumer, diving deep into the realms of creativity and critical analysis. Join us as we dissect global and local media and build our practical filming and editing skills as we work toward the final goal of the course, a short film showcase.

METALS FABRICATION/ WELDING110

Students in this welding course develop basic skills in the safe use of arc and MIG welding equipment. Instruction will also be given in oxygen-acetylene and plasma cutting equipment as well as machines and equipment used to cut and form metals. Students work in a well-equipped, modern welding shop to construct or repair products such as furniture and cargo trailers. This course will appeal to students interested in exploring opportunities in welding metal working and mechanical servicing and many other skilled trades. **Lab Fee: \$50.**

METALS FABRICATION/ WELDING BLOCK

This course is only available to grade 12 students. During this two period afternoon block, students will complete both Metals Fabrication (Welding) 110 (see description above) and 120. Metals Fabrication(Welding) 120 introduces students to advanced skills and practices, building upon the theory and practical skills obtained in Metal Fabrication / Welding 110. This advanced course encapsulates and reinforces theory in Math, SMAW, GMAW, PAW, OFC, all of which leads to a capstone project. Students will learn valuable safety procedures, tool skills and engage with the NB global competencies. To successfully achieve the goals, set forth by this curriculum, class size is limited to a recommended maximum of sixteen students. It must be noted that the class size may be further limited based on the physical space available to offer a safe working environment for students. **Lab fee: \$75**

METALS PROCESSING 110

(Not offered in 2024-25; Available 25-26)

This course develops skills in the operation of lathes, shapers, grinders and milling machines in the lab, students learn a variety of processes used to form parts for machines and tools. This course would appeal to students interested in pursuing a career in the mechanic or machines trades,

mechanical engineering or mechanical technology area. **Lab fee \$25.**

MILL AND CABINET WORK 120

Recommended pre-requisite: Intro to Skilled Trades 110

Do you like building projects with your hands? This is the second of the woodworking classes offered which engages students who have previous woodworking experience. You will learn how to effectively and safely use a variety of wood working and hand tools. Topics will include learning about the Tree to shelf process and how Lumber is harvested, dressing stock, advanced joinery techniques, moldings, and traditional woodworking methods. Other projects may include special projects or personal projects if time allows. **Lab fee \$50.**

MODERN HISTORY 112, 113 OR

FI Modern History 112

250 years seems like a long time. It isn't, really.

This walk through history looks at rebels and revolutionaries, war and peace, alliances and enemies in order to help us understand how we got here and what we should do next. We will learn about stories from the French Revolution, the world wars, the Cold War, and more! Once you see the modern world through the eyes of a historian your perceptions will change. This course can count as your social studies credit.

MUSIC 10 Guitar, Instrumental or Keyboarding

This is a recommended prerequisite course for Music 112 (Guitar, Instrumental, Keyboarding)

The goals of this course are to offer students an opportunity to develop technical and performance skills in instrument (wind or percussion), keyboard, or guitar. The students will also develop theory and aural skills, music literacy, and discrimination skills. The course is fun and challenging for those who are interested in music. Each student can choose one of the three options offered and should pick the course that is their music specialty.

MUSIC 112 (GUITAR)

Prerequisite: Grade 10 Music (Guitar)

This course is designed for students that have taken Grade 10 music and wish to extend their study with a specific guitar focus. Students will

learn to read music and compose and perform pieces. The course will study the development of the guitar historically and learn performance techniques and theory through various styles such as blues, jazz, folk, and classical.

MUSIC 112 (INSTRUMENTAL)

Recommended Prerequisite: Music 10

This course is for anyone who has played an instrument for the last two or more years.

Approximately 50% of class time is spent on creating and performing a varied repertoire on your instrument of choice and developing fluency in technology that meets industry standards. The balance of the time is spent on theory and music appreciation. There will be opportunity to perform and compose for both solo and group performances. The course builds on outcomes and experiences covered in grades 9/10.

MUSIC 112 (KEYBOARDING)

Recommended Prerequisite: Music 10

This course is designed for students who have taken the grade 10 Music course and who wish to extend their experience to more advanced skills. Approximately half of the class time will be spent playing the keyboard while the remainder will be used to study how music is put together. Composition using various forms of technology is included so familiarity with technology will be an asset. In-class solo and group performances occur regularly.

NBCC SKILLED TRADES & WORK READY MATH 120

Prerequisites: Financial & Workplace Math 110 or Foundations Math 110

The purpose of this course is to refresh skills in mathematics developed throughout school in areas deemed essential for the successful completion of trades programs. Although the topics covered in this course are common to any math program, every effort is made to illustrate their usage in the trades' professions. Upon completion of this course students will receive a high school credit and, in addition, if they attend a trades' program at NBCC they may apply for the Math 1208 credit thus this course provides dual credit at high school and NBCC. Topics include: decimals, fractions, percentages, measurement, area, volume and perimeter.

NUMBERS, RELATIONS & FUNCTIONS 10

FI NUMBERS, RELATIONS & FUNCTIONS 10

This course is the prerequisite course for the Foundations and Pre-Calculus Pathways and sets the foundation for topics in relations and functions. Topics include linear relations and functions, polynomials, radicals, and exponents. Students entering this course should have a 70% or higher in Math 9B.

NUTRITION FOR HEALTHY LIVING 120

This course is designed to introduce students to making healthy food choices, maintaining a balance between eating habits and physical activity and the use of preventative strategies that contribute to overall wellness. Current health trends and issues relating to chronic diseases, lifestyles, and food technologies will be explored and students will be encouraged to use research and reliable information to examine their own eating habits and lifestyle choices. This course will be of interest to students concerned with personal wellness and those interested in pursuing a career in a health or wellness related field. **Lab fee \$5.00.**

OUTDOOR EDUCATION 110

Recommended Prerequisite: Grade 10 Health & Phys. Educ.

This course will develop personal outdoor recreation skills based on environmental ethics. Students will learn many different outdoor skills. Possible topics covered include fire making, outdoor cooking, skiing, snowshoeing, tree identification, map reading, compass and gps, wild edible and poisonous plants, knot tying and archery. Students must be prepared to plan, lead and evaluate out-trip experiences from personal and group dynamics perspectives. Please note that it is recommended that students do not take this course and PE Leadership 120 during the same semester. **Enrolment is limited.**

Course fee: \$100

PERSONAL INTEREST 1

Designed for grade 12 students, the one credit Personal Interest course will appeal to those interested in a self-directed exploration of a topic or subject of their own choosing. Students selecting this course are provided with the time and opportunity, to develop and pursue personal interests. Students will be required to design the

Leo Hayes High School

program of study in conjunction with their teacher(s), and/or other mentors in the school or community. Students must follow safety guidelines and review and follow policies related to their projects. Students will need a high degree of independence and there is an application process for those interested. The outcomes for the Personal Interest course are based on the New Brunswick Global Competencies. **Application required—see Guidance.**

PERSONAL INTEREST 2

Designed for grade 12 students, the 2- period/ 2 credit Personal Interest Block will appeal to those interested in an in-depth, self-directed exploration of a topic or subject of their own choosing. Students will be required to design the program of study in conjunction with their teacher(s), and/or other mentors in the school or community. They will need to be self-starters, highly motivated and able to work with minimal supervision. Students must follow safety guidelines and review and follow policies related to their projects. Students will have approximately 160 hours to devote to their project during the school day, but extra time is often required outside of school. Due to the amount of time provided, the breadth, scope and expectations of the projects produced in the Personal Interest 1&2 course are greater than those of the one credit Personal Interest course. The outcomes for the Personal Interest course are based on the New Brunswick Global Competencies. **Application required—see Guidance.**

PHYSICAL EDUCATION 10

This is a recommended prerequisite for Outdoor Pursuits 110 & Physical Education Leadership 120 Physical Education Grade 10 is a class designed to introduce teenagers to lifetime fitness activities that will hopefully generate some interest that they will continue on with after their high school years. Teachers will offer the students a variety of activities divided into three-week units, with an emphasis being placed on effort, and interest, rather than athletic ability. Depending on the semester that the course is taken, the activities may differ, but the main emphasis on all units will be fitness. Activities that will be offered include: Fitness, Weight training, anaerobic/aerobic exercise, Badminton, Basketball, Volleyball,

Soccer, Softball, Orienteering, Low organized games

PHYSICS 111

Prerequisites: min 85% in Science 10 & NRF10

Recommended Co-Requisite: Foundations 110

Explore the depths of physics with Physics 111, a course designed for motivated students seeking an enriched understanding of mechanics and wave theory. Throughout the course, students will delve into the kinematics and dynamics of objects in one dimension, learning to analyze forces, and energy. The course will also explore wave theory, introducing students to the properties of waves, wave behavior and wave interference. This course combines rigorous theoretical exploration, laboratory work, and independent projects emphasizing critical thinking and analytical skills.

Lab Fee 5\$.

PHYSICS 112

Prerequisites: Science 10; GMF Math 10

Recommended Co-Requisite: Foundations 110

Physics 112 offers a comprehensive exploration of mechanics and wave theory, providing students with a foundational understanding of the fundamental principles governing motion and wave behavior. Throughout the course, students will delve into the kinematics and dynamics of objects in one dimension, learning to analyze forces, and energy. The course will also explore wave theory, introducing students to the properties of waves, wave behaviour and wave interference. Through a combination of theoretical learning, hands-on experiments, and problem-solving, students will develop critical thinking skills and the ability to apply physics concepts to real-world scenarios. **Lab Fee 5\$.**

PHYSICS 121

Prerequisite: Physics 111

Recommended Prerequisite Pre-Calculus 110 85% or above.

Physics 121 is an enriched course that delves into the intricacies of mechanics and electromagnetism. This enriched curriculum challenges students to explore new applications of newtons laws of motion and the nuances of motion in multiple dimensions, including complex projectile and circular motion scenarios. The Electromagnetism segment dives into

Leo Hayes High School

sophisticated concepts such as electric fields, potentials, and intricate circuits. Through a blend of theoretical rigor, experiments, and independent projects, students will develop critical thinking and problems solving skills. **Lab Fee 5\$.**

PHYSICS 122

Prerequisites: Physics 112/111

Physics 122 is an engaging and comprehensive course that builds upon the foundations laid in Physics 11. This course focuses on the Mechanics and Electromagnetism branches of Physics providing students with a deeper understanding of the fundamental principles governing the physical world. In the Mechanics units, students will explore the new applications of Newton's Laws of Motion and the complexities of motion in multiple dimensions, incorporating concepts such as projectile motion and circular motion. The Electromagnetism unit will delve into the fundamental principles of electric fields, potentials, and circuits. This course prepares students for higher-level studies in physics and related fields, emphasizing critical thinking, problem-solving, and real-world applications. **Lab Fee 5\$.**

POLITICAL SCIENCE 120

What is power? How does government function? Who is responsible for making the rules and what must they consider? This course will look at the most common ideas in politics and help you understand why our leaders take such different approaches to making laws and shaping our world. You will learn to evaluate political ideas, understand political debate, and speak clearly about your political beliefs. This course is valuable for both political newbies and political enthusiasts.

POST INTENSIVE FRENCH 10

In PIF 10, students will continue their journey of learning French language and culture through developing language skills. Students will explore units on movies and technology while assessing their French language skills in several areas such as speaking, reading and writing that are in line with the CEFR.

POST-INTENSIVE FRENCH 110

Continue to develop your French language skills through a variety of speaking, reading, and writing activities intended to improve French proficiency.

The course is designed for students who have NOT been in French Immersion and focuses primarily on oral communication skills. Themes at this level include injustice, mysteries, and the power of photographs. Instruction, materials, and classroom interactions will be in French.

POST-INTENSIVE FRENCH 120

Continue to develop your French language skills through a variety of speaking, reading, and writing activities intended to improve French proficiency. The course is designed for students who have NOT been in French Immersion and focuses primarily on oral communication skills. Themes of study include planning for the future, ecological challenges, and cultures of the World.

Students in this course will have the opportunity to participate in the French Oral Proficiency Interview and will receive a certificate from the Province of New Brunswick indicating their proficiency level. Instruction, materials, and classroom interactions will be in French.

POWER TRAIN AND CHASSIS 110

This course is designed to develop skill and knowledge in the service and maintenance of the automobile chassis and power train. Emphasis is placed on the function, repair and replacement of components. Topics include spring and shock assemblies, brakes, steering wheel bearings, tires, transmissions, differential and drive lines. Students planning on pursuing a career in the motor vehicle service industry would benefit from this course. ***Automotive Electrical Systems 120 must also be selected. Lab fee 5\$.***

PRE-CALCULUS 110 OR FI PRE-CALCULUS 110

Prerequisite: Foundations of Mathematics 110

This course is the first course in the Pre-Calculus pathway which is designed for entry into post-secondary programs that require the study of theoretical calculus. Topics include algebra and number, relations and functions, and trigonometry. Students entering this pathway should have a 70% or higher in the Foundations 11 course.

PRE-CALCULUS 120A

Prerequisite : Pre-Calculus 110

The Pre-Calculus pathway is designed for entry into post-secondary programs that require the

study of theoretical calculus. Topics include in-depth study of trigonometry and various functions both graphically and algebraically. Students entering this pathway should have a 70% or higher in the Pre-Calculus 11 course.

PRE-CALCULUS 120B

Prerequisite : Pre-Calculus 12A

The Pre-Calculus pathway is designed for entry into post-secondary programs that require the study of theoretical calculus. Topics include sequences and series, radical, polynomial, rational and reciprocal functions. Students entering this pathway should have a 70% or higher in the Pre-Calculus 12A course.

PSYCHOLOGY110

The vision for this course is to introduce learners to the systematic and scientific study of behaviour and mental processes. The course therefore examines why we think, feel, and act the way we do. Students will have the opportunity to explore, reflect on, and think critically through a psychological lens. Students will apply a variety of psychological concepts to real-world situations to develop competencies in personal development and self-awareness. Learners in Psychology 11 will cover a variety of areas related to psychology including scientific methodologies, historical perspectives, psychological disorders, and potential career opportunities. Students can expect to participate in class discussions, self-reflection, interacting with media, and collaborating with peers. The topics will include brain structure and function, intelligence, states of consciousness, and ethical research design.

PSYCHOLOGY120

Prerequisite: Psychology 110

This course will provide students with a deeper understanding and applications of psychological methodologies and specific areas of psychological application. Psychology 120 can be used as an admission course in some universities.

RESIDENTIAL FINISH AND INSULATION 120

This advanced building construction course enables students to acquire knowledge and skills in the installation interior and of insulation, wall and ceiling cladding and the installation of trim, doors and windows. This course will be of interest

to students exploring career opportunities in the building construction industry. ***Framing and Sheathing 110 must also be chosen.***
Lab fee \$15.

ROBOTICS & AUTOMATED TECHNOLOGY 120

This is a technical course that deals primarily in Pneumatic systems and EV3 robotics. Students will learn about the various components of Pneumatic systems used in industry and how they are utilized. Classes are largely lab based using hands-on training centers and actual equipment, to complete the lab exercises. The robotics part of this class will see students do a 6-8-week study on Engineering in Robotics using the Lego EV3 as a medium. Students will learn how to program the EV3 brick, download the program into a Robot they have built complete with various sensors and have it complete various tasks on its own. This is not remote-control robotics! The various sensors including, touch sound, sight and hearing will enable you to build an interactive robot capable of completing tasks entirely by itself.

SCIENCE FOR SUSTAINABLE SOCIETIES 10

FI SCIENCE FOR SUSTAINABLE SOCIETIES 10

Science for Sustainable Societies. This course will investigate the connections between matter and energy in systems. Students will be expected to demonstrate an understanding of the nature of science, the relationships between science and technology, and of the social and environmental connections. General topics include safety, chemistry, work, power, energy, and electricity. The approach of this course will provide the critical knowledge and skills required for grade 11 sciences.

SOCIOLOGY 120

Have you ever wondered why humans behave the way they do? What shapes their attitudes, behaviors, beliefs, and values? Sociology is the study of society and tries to explain why humans behave the way they do when they are in groups. In this class you will learn to critically examine, and better understand your own beliefs about the social world. You will learn about topics such as: culture, race, crime, gender, social structure, social reform, religion, family, media and deviance.

Leo Hayes High School

SPANISH 120

This course introduces the Spanish language and culture by developing listening, speaking, reading, and writing skills. Each thematic unit consists of new vocabulary and grammar concepts, reading and listening comprehension activities, speaking, and writing activities, multimedia cultural presentations, and interactive activities to reinforce language acquisition. There is a strong emphasis on providing context and conversational examples for each language concept. Students should expect to be actively engaged in their own language learning, become familiar with common vocabulary terms and phrases, participate in simple conversations, and respond appropriately to basic conversational prompts.

SPORT & RECREATION LEADERSHIP 120

Recommended Prerequisite: Grade 10 Phys. Ed. Health and Physical Education 120 is an elective course for students who wish to develop leadership skills. The purpose of the course is to prepare students to become skilled and knowledgeable in order to become involved and assume leadership in community and school sport and recreation programs. The course will involve both theoretical and practical aspects. The theory will deal with the concept of leadership; characteristics of leaders and those led; sport and recreation in contemporary society; and health concerns of leaders. The practical aspects will deal with managing, teaching, coaching, and officiating, athletic injuries. Students are required to volunteer for 35 hours during the semester in and out of class time. Please note that it is recommended that students do not take this course and Outdoor Pursuits 110 during the same semester. **Enrolment is limited.**
Course fee \$40.

TUNE UP AND EMISSIONS 120

Not offered in 2024-25; Available 25-26

This advanced automotive course includes the study of automobile fuel and emission systems. Students will study the component functions and service procedures of modern fuel injection and emission systems. This course would be of interest to students entering the automotive, aircraft or marine service industries. **Internal Combustion Engines 110 must also be chosen.**

VISUAL ARTS 10

This is a course for students who have an interest in art. The course is designed to cover a variety of media, both 3-D and 2-D as well as art history and theory experienced through art projects. Students will have an opportunity to experience and explore each of the following types of media: sculpture 3-D (clay, papier mâché), drawing 2-D design (perspective, tone/shading, drawing from observation) and painting 2-D design (water colour, colour theory, landscapes, ½ portraits, still life) **Lab fee: \$10**

VISUAL ARTS 110

Recommended Prerequisite: Visual Arts 10

The student is given some opportunities to work independently and to explore in greater depth, materials and concepts touched on in Grade 10 Visual Arts. A look at several artists from Art History creates a background for various projects. This course requires students to have painting and drawing materials.

Lab fee: \$10.

VISUAL ARTS 120

Prerequisite: Visual Arts 110

Visual Arts 120 is designed for students who wish to pursue art related interests or careers. Students will review skills and concepts previously learned in grade 11, and apply them to select media with the goal of creating interesting and technically advanced art. A look at several artists from Art History creates a background for various projects. Students will also critique aspects of their creative process and product.

Lab fee: \$10.

WABANAKI STUDIES 120

Indigenous peoples have lived on and nurtured this land since time immemorial. But do most of us truly understand what this means? Develop your understanding of Wabanaki cultures, languages, arts, stories and contributions prior to European contact. Dig into the history of colonialism, Indigenous resistance, and important perspectives in history. Understand the influences of age-old history on dealing with modern Indigenous issues. This course can count as your Social Studies credit.

WELLNESS THROUGH PHYSICAL EDUCATION 110

'This course is designed to promote healthy active living for life. It is intended to encourage the broad-based exploration of non-traditional approaches to physical activity and wellness. This is an activity-based course that requires students to be physically active. Students will have the opportunity to participate in activities such as yoga, zumba, fencing, bowling, curling, skating, lacrosse, etc. Students that enroll in this course are expected to be prepared for physical activity by wearing proper clothing and taking part in all planned activities. Some classes will be led by community guest speakers such as physiotherapists, mental health professionals and dieticians. This course has a classroom component that studies the dimensions of wellness allowing students to incorporate learned information when setting personal wellness goals.

Course fee: \$50.00

WORLD ISSUES 120

The world is big, diverse, and hard to understand. This course gives you the chance to learn about some of the major stories in the news and in recent history alongside your peers. When we understand the big picture, we are in a better place to live in and make positive change towards a fair and sustainable future around the globe. You will learn about the topics of humanity, sustainability, interdependence, and geopolitics. This course can count as your social studies credit.

WRITING 110

Are you passionate about stories, captivated by movies, and eager to master the art of storytelling? Writing 110 invites you to dive into the world of creative writing, empowering you to craft narratives like your favourite authors and screenwriting maestros. This course explores writing fundamentals, centering on storytelling. Embracing a workshop-style learning environment, we foster an atmosphere where you will collaborate with peers and provide support and constructive critique to enhance your narrative skills.

YOGA 110

Yoga 11 introduces students to Yoga and its vast capacity to bring health to body, mind and emotions. The intention is for students to develop a lifelong personal practice of yoga not only to maintain exceptional physical condition, but also to develop healthy relationships with self and others. Students will participate in various activities, including the physical practice, personal reflection, partner exercises, group discussion and classroom theory. The physical aspect of yoga involves the acquisition and development of skills such as strength, flexibility, cardiovascular endurance, balance, regulation of energy through breathing and mental focus. All of these skills are of significant benefit to one's overall health and well-being as well as other physical pursuits.

Classroom sessions will address topics such as: the essentials of good nutrition, ethical principles (like kindness, generosity and mutual respect) and exercises which empower students to become positive and purposeful members of society.

Lab fee: \$5

Leo Hayes High School

LOCAL OPTIONS

These courses have been developed by LHHS Departments and have been approved by the Department of Education to provide additional course selection opportunities for our students. Students may take up to two (2) courses to meet the graduation requirement.

INDIGENOUS WABANAKI ART 110

This is an introductory art course open to all students that introduces themes reflective of Native culture. Students will explore hands-on crafts such as bead work, paper-maché (mask/puppet) and mural creation

INTRODUCTION TO DEBATE 110

Debate 110 is an active and engaging course that focuses primarily on the art of public speaking and rhetoric across three styles of competitive debate. Beyond simple arguments, students in this course will have daily practice in speaking, in-depth research, and case building, as well as

working as a team - skills that have proven beneficial to students beyond the scope of the course. Debate 110 students will engage in topics that will challenge their thinking and encourage them to consider ideas and values outside their own experience. When not in a speaking role, students in Debate 110 will be involved in judging, offering commentary, and timing. Please note that daily speaking, research, and writing are crucial elements of Debate 110

INTRODUCTORY WOLASTOQEQY 10 & 110

The primary objective of this course is to introduce students to the Wolastoqey language, their culture and traditions. Students will develop the ability to communicate orally in the Wolastoqey language. Students taking this course will learn to introduce themselves, have small conversations, and speak basic phrases while learning about Wolastoqey culture and oral traditions.

Leo Hayes High School
Courses with Required and Recommended Prerequisites and/or Application Requirements

Course	Recommended and Required Prerequisite/Application
Biology 111	Science for Sustainable Societies 10
Biology 121	Science for Sustainable Societies 10
Calculus 120	Pre-Calculus 12A & 12B
Chemistry 111	Science, GMF10; Recommended Co-requisite -Foundations110
Chemistry 112	Science, GMF 10; Recommended Co-requisite -Foundations 110
Chemistry 121	Chemistry 111, Recommended pre-requisite; Foundations 110
Chemistry 122	Chemistry 112/111
Computer Science 120	Computer Science 110
Cooperative Education 120	Application required
Culinary Technology 120	Culinary 110 Required
Dramatic Arts 120	Dramatic Arts 110
Electrical Wiring 120	Electrical Wiring 110
English 111 Foundational	English 10 Foundational (recommended mark 85%)
English 112 Foundational	English 10 Foundational
English 113 Foundational	English 10 Foundational
English 121	English 111 (Info Text & Lit Text)
English 122	English 112 (Info Text & Lit Text)
English 123	English 113 (Info Text & Lit Text)
Fashion Technology 120	Fashion Technology 110
FI Language Arts 120	FI Language Arts 110
FI Foundations of Math 110	FI NRF & FI GMF 10
FI Pre-Calculus 110	FI Foundations of Mathematics 110
Financial & Workplace Math 110	Geometry, Measurement and Finance 10
Financial & Workplace Math 120	Fin and Work Math 110 or Foundations 110
Foundations of Math 110	NRF 10 & GMF10
Foundations of Math 120	Foundations of Mathematics 110
Metals Fabrication/Welding 120	Metals Fabrication/Welding 110
Mill and Cabinet Work 120	Intro to Skilled Trades 110
Music 112 (Guitar)	Recommended pre-requisite; Music 10
Music 112 (Instrumental)	Recommended pre-requisite; Music 10
Music 112 (Keyboarding)	Recommended pre-requisite; Music 10
Music 122	Music 112
NBCC Foundations 120	Either grade 11 math credit (Foundations of Financial)
Outdoor Pursuits 110	Recommended pre-requisite; Health & Physical Education 10
Personal Interest 1 & 2	Application required
Post Intensive French 122	Post Intensive French 112
Physics 111	Science, GMF 10; Recommended Co-requisite-Foundations 110
Physics 112	Science, GMF 10; Recommended Co-requisite-Foundations 110
Physics 121	Physics 111 Recommend Pre-requisite; Pre-Calculus 110
Physics 122	Physics 112/111; Recommended Pre-requisite; Pre-Calculus 110
Pre-Calculus 110	Foundations 110
Pre-Calculus 12A	Pre-Calculus 110
Pre-Calculus 12B	Pre-Calculus 12A
Psychology 120	Psychology 110
Sport & Rec Leadership 120	Recommended pre-requisite; Health & Physical Education 10
Visual Arts 110	Recommended pre-requisite; Visual Arts 10
Visual Arts 120	Recommended pre-requisite; Visual Arts 110
Wellness through Physical Education 110	Recommended pre-requisite; Health and PE 10

Leo Hayes High School
Grade 10 Course Selection Planning Sheet 2024/25

Name: _____

Homeroom: _____

Students entering grade 10 must take the following courses:

- English Language Arts 10 Foundational 10
- **English Language Arts 10 Extended 10
- Geometry, Measurement & Finance (GMF) 10 (ENG or FI)
- Civics (ENG or FI)
- **Science 10 (ENG or FI)
- Post Intensive French 10 **OR** FI Language Arts 10 **OR** Wolastoqey 10

**These courses are strongly recommended for all. See school counsellor for exceptions.

Students must also select 4 courses from the following list:

*Note – you may only select **one** music course from the list below.

- | | |
|---|---|
| <ul style="list-style-type: none"> • Biology 111/112 • Computer Assisted Manufacturing 110 • Creative Arts 110 • Dance 110 • Dramatic Arts 110 • Entrepreneurship 110 • Environmental Geoscience 110 • Fashion Technology & Design 110 • FI Numbers, Relations & Functions 10 • FI/FSL Biology 112 • FILA 110 (Gr 6 Entry) • FILA 110 (Gr 3 Entry) • FSL Techniques de Comm. 110 • Hockey Class/Wellness 110 (application required) • Housing and Interior Design 120 • Hospitality & Tourism 110 • Human Physiology 110 | <ul style="list-style-type: none"> • Human Services 110 • Indigenous Wabanaki Art 110 • Introduction to Debate 110 • Introduction to Skilled Trades 110 • Introduction to Wolastoqey 110 • Music 10 - Guitar <ul style="list-style-type: none"> - Keyboard - Instrumental • Numbers, Relations & Functions 10 • Physical Education 10 • Post Intensive French 110 • Psychology 110 • Visual Art 10 • Visual Art 110 • Wellness 110 • Writing 110 • Yoga 110 |
|---|---|

Choose 4 elective courses from above:

1. _____

3. _____

2. _____

4. _____

Choose two alternates:

1. _____

2. _____

These Courses Cannot be selected as Alternates		
All Level 1 Courses	Intro to Skilled Trades	Hockey Class

Grade 11 Course Selection Planning Sheet 2024/25

Name: _____ Homeroom: _____

Cluster	Courses cannot be counted in more than one area.	
LANGUAGE & LITERACIES (24 CH)	Required (20 credit hours) <ul style="list-style-type: none"> • English Language Arts 10 Foundational • English Language Arts 10 Extended • PIF 10 or FILA 10 or Intro to Wolastoqey 10 • English Language Arts 11 Foundational • English 12 	
	Choose one of the following in grade 11 or 12: <ul style="list-style-type: none"> ○ English Language Arts Extended 11 ○ FI Language Arts 110 (Early or Late) ○ FI Language Arts 120 (Early or late) ○ Post Intensive French 110 ○ FSL Technique to Communication 110 ○ Graphic Novels 120 ○ Intro to Wolastoqey 110 ○ Media Studies 120* ○ Post Intensive French 120 ○ Spanish 120 ○ Writing 110 	
HUMANITIES (8 CH)	Required (4 credit hours): <ul style="list-style-type: none"> • Civics or FI Civics 	
	Choose one course from the designated Humanities Course List on left: <ul style="list-style-type: none"> ○ Ancient and Medieval History 110 ○ Canadian History 122 ○ FI Modern History 112 ○ FI/FSL Canadian History 122 ○ Modern History 112 or 113 ○ Wabanaki Studies 120 ○ World Issues 120 <div style="float: right; text-align: left;"> Optional Humanities Courses: <ul style="list-style-type: none"> ○ Economics 120 ○ Intro to Debate 110 ○ Law 120 ○ Political Science 120 ○ Sociology 120 </div>	
MATHEMATICS (12 CH)	Required (4 credit hours): <ul style="list-style-type: none"> • Geometry, Measurement and Finance 10 or FI Geometry, Measurement and Finance 10 	
	You must choose one of the following in grade 11: <ul style="list-style-type: none"> ○ Foundations of Mathematics 110 or FI/FSL Foundations 110 ○ Financial & Workplace Mathematics 110 	
	You may also choose one of: <ul style="list-style-type: none"> ○ Numbers Relations & Functions 10 or FI Numbers Relations & Functions 10 ○ Pre-Calculus 110 or FI/FSL Pre-calculus 110 	
SCIENCE (8CH)	Strongly recommended (4 credit hours): <ul style="list-style-type: none"> • Science for Sustainable Societies 10 or FI/FSL Science for Sustainable Societies 10 	
	Choose at least one of the following: <ul style="list-style-type: none"> ○ Auto Electrical Systems 120* ○ Biology 111 or 112 ○ Biology 121 or 122 ○ Chemistry 111 or 112 ○ Chemistry 122 or 122 ○ Environmental Geoscience 110 ○ Environmental Sci. 120 ○ FI/FSL Biology 112 ○ Human Physiology 110 ○ Introduction to Electronics 110 ○ Physics 111 or 112 ○ Physics 121 or 122 	
Personalized Well-Being (20CH)	Creative Arts (4CH)	Choose one of the following (if not already done): <ul style="list-style-type: none"> Creative Arts 110 Digital Production 120* Dramatic Arts 110 Dramatic Arts 120 Fashion Technology and Design 110* Fashion Technology and Design 120* Graphic Art & Design 110 Indigenous & Wabanaki Art 110 Media Studies 120* Music 10 Music 112 Visual Arts 10 Visual Arts 110 Visual Arts 120 <p>*Dual Credit/Personal Interest Courses Will be Considered</p>

Leo Hayes High School

Personalized Well-Being continued... (20CH)	Wellness & Physical Education (4CH)	<p>Choose one of the following in grade 11 or 12 (if not already done):</p> <table style="width: 100%; border: none;"> <tr> <td>Dance 110</td> <td>Physical Education 10</td> </tr> <tr> <td>Early Childhood Development 120</td> <td>Psychology 110</td> </tr> <tr> <td>FI/FSL Individual and Family Wellness 120</td> <td>Psychology 120</td> </tr> <tr> <td>Human Services 110</td> <td>Sport and Recreation Leadership 120 (Grade 12 only)</td> </tr> <tr> <td>Individual Family Wellness 120</td> <td>Wellness through Physical Education 110</td> </tr> <tr> <td>Nutrition for Healthy Living 120</td> <td>Yoga 110</td> </tr> <tr> <td>Outdoor Education 110</td> <td></td> </tr> </table> <p>*Dual Credit/Personal Interest Courses Will be Considered</p>	Dance 110	Physical Education 10	Early Childhood Development 120	Psychology 110	FI/FSL Individual and Family Wellness 120	Psychology 120	Human Services 110	Sport and Recreation Leadership 120 (Grade 12 only)	Individual Family Wellness 120	Wellness through Physical Education 110	Nutrition for Healthy Living 120	Yoga 110	Outdoor Education 110												
	Dance 110	Physical Education 10																									
	Early Childhood Development 120	Psychology 110																									
FI/FSL Individual and Family Wellness 120	Psychology 120																										
Human Services 110	Sport and Recreation Leadership 120 (Grade 12 only)																										
Individual Family Wellness 120	Wellness through Physical Education 110																										
Nutrition for Healthy Living 120	Yoga 110																										
Outdoor Education 110																											
Career Connected (4CH)	<p>Required for grade 10's in 2023/24(4credit hours):</p> <ul style="list-style-type: none"> • Career Pathway Design 10 or Personal Development & Career Planning 10 <p>Career Occupational:</p> <table style="width: 100%; border: none;"> <tr> <td>Career Pathway Design 10</td> <td>Goals, Growth, and Grit 120</td> </tr> <tr> <td>Coop 120</td> <td>Housing and Interior Design 120*</td> </tr> <tr> <td>Entrepreneurship 110</td> <td>Hospitality and Tourism 110</td> </tr> <tr> <td>Fashion Technology and Design 110/120*</td> <td>Marketing 110</td> </tr> </table> <p>Information and Communication Technology:</p> <table style="width: 100%; border: none;"> <tr> <td>Computer Assisted Manufacturing 110</td> <td>Robotics and Automated Tech 120</td> </tr> <tr> <td>Computer Science 110</td> <td>Cybersecurity 120</td> </tr> <tr> <td>Computer Science 120</td> <td>Digital Production 120*</td> </tr> </table> <p>Skilled Trades:</p> <table style="width: 100%; border: none;"> <tr> <td>Automotive Electrical Systems 120*</td> <td>Metals Fabrication/Welding 110 / 120</td> </tr> <tr> <td>Culinary Technology 110 / 120</td> <td>Metals Processing 110 (NA 2024/25)</td> </tr> <tr> <td>Electrical Wiring 110 and/or 120</td> <td>Mill and Cabinet Work 120</td> </tr> <tr> <td>Framing and Sheathing 110</td> <td>Power Train and Chassis 110</td> </tr> <tr> <td>Internal Combustion Engines 110 (NA 2024/25)</td> <td>Residential Finish 120</td> </tr> <tr> <td>Intro to Skilled Trades 110</td> <td>Tune-up and Emissions 120 (NA 2024/25)</td> </tr> </table> <p>*Dual Credit/Personal Interest Courses Will be Considered</p>	Career Pathway Design 10	Goals, Growth, and Grit 120	Coop 120	Housing and Interior Design 120*	Entrepreneurship 110	Hospitality and Tourism 110	Fashion Technology and Design 110/120*	Marketing 110	Computer Assisted Manufacturing 110	Robotics and Automated Tech 120	Computer Science 110	Cybersecurity 120	Computer Science 120	Digital Production 120*	Automotive Electrical Systems 120*	Metals Fabrication/Welding 110 / 120	Culinary Technology 110 / 120	Metals Processing 110 (NA 2024/25)	Electrical Wiring 110 and/or 120	Mill and Cabinet Work 120	Framing and Sheathing 110	Power Train and Chassis 110	Internal Combustion Engines 110 (NA 2024/25)	Residential Finish 120	Intro to Skilled Trades 110	Tune-up and Emissions 120 (NA 2024/25)
Career Pathway Design 10	Goals, Growth, and Grit 120																										
Coop 120	Housing and Interior Design 120*																										
Entrepreneurship 110	Hospitality and Tourism 110																										
Fashion Technology and Design 110/120*	Marketing 110																										
Computer Assisted Manufacturing 110	Robotics and Automated Tech 120																										
Computer Science 110	Cybersecurity 120																										
Computer Science 120	Digital Production 120*																										
Automotive Electrical Systems 120*	Metals Fabrication/Welding 110 / 120																										
Culinary Technology 110 / 120	Metals Processing 110 (NA 2024/25)																										
Electrical Wiring 110 and/or 120	Mill and Cabinet Work 120																										
Framing and Sheathing 110	Power Train and Chassis 110																										
Internal Combustion Engines 110 (NA 2024/25)	Residential Finish 120																										
Intro to Skilled Trades 110	Tune-up and Emissions 120 (NA 2024/25)																										
Plus (8CH)	<p>An additional 8 CH from any of the Personalized Wellbeing including: Creative Arts, Wellness & Physical Education, Career Connected</p>																										
Core Cluster Electives (8CH)	<p>An additional 8 CH from any of the core clusters including: Language and Literacies, Humanities, Mathematics, Science, Personalized Wellbeing.</p>																										
Plus	20 CH	<p>An additional 20 CH from: core clusters, dual credit, Personal Interest, local options, challenge for credit.</p>																									

*Courses with Asterisk may only be used to fulfill the requirements for one cluster.

Students entering Grade 11

1. English Lan Arts 11__ Foundational
2. Lang & Lit _____
3. Humanities _____
4. Financial & Workplace Math 110 or Foundations 110 or FI/FSL Founds 110
5. Science _____
6. Creative Arts _____
7. Wellness & PE _____
8. _____
9. _____

10. _____

Choose 3 alternate courses and list them in order of preference:

Alternate #1: _____

Alternate #2: _____

Alternate #3: _____

You need two of the following Math courses to graduate (NRF 10, Foundations 110, Fin & Workplace 110, Fin & Workplace 120 OR NBCC Skilled Trades Math 120) ***

These Courses Cannot be selected as Alternates		
All Level 1 Courses	Auto Electrical Systems 120	Culinary Tech 110/120
Coop 120	Framing and Sheathing 110	Intro to Skilled Trades 110
Metals Fabrication (Welding) 110/112	Outdoor Education 110	Personal Interest 1 & 2
Power Train and Chassis 110	Residential Finish and Insulation 120	Sport & Rec Leadership 120

Leo Hayes High School
Grade 12 Course Selection Planning Sheet 2024/25

Name: _____ Homeroom: _____

Students Graduating in 2025 must complete a min of 18 courses including (2) math and 6 other courses listed below. They must complete a min of 5 courses at the grade 12 level and only 2 of their courses can be local options. (See local options p 28.)

- English Language Arts Literary Text 11
- English Language Arts Informational Text 11
- Math – must pass **two** of (Numbers Relations and Functions 10 **and either** Fin and Workplace 110 **OR** Foundations 110) **OR** (Fin & Workplace 110 **and either** Fin & Work Math 120 **OR** NBCC Sk Trd Wrk Ready 120)
- Science – must pass 1 of (Automotive Electrical Systems 120, Biology, Chemistry, Human Physiology 110, Environmental Geoscience 110, Introduction to Electronics 110, Intro to Environmental Science 120, Physics, Robotics and Automated Technology 120)
- Humanities must pass 1 of (Canadian History 122 or FI Canadian History 122, Modern History 11 or FI Modern History 112, Indigenous studies 120 or World Issues 120)
- 1 Fine Arts & Life Role Development course (see list of options below)
- English 12

Fine Arts/Life Role Development

*Automotive Electrical Systems 120, Cooperative Education 120, Creative Arts 110, Culinary Technology 110/120, Dramatic arts 110/120, Early Childhood Coop 120, Electrical Wiring 110/120, Entrepreneurship 110, Fashion Technology & Design 110/120, FI/FSL Individual Family Wellness 120, Framing and Sheathing 110, Graphic art and Design 110, Growth, Goals & Grit 120, Housing & Interior Design 120, Individual & Family Wellness 120, Internal Combustion Engines 110, Introduction to Skilled Trades 110, Long-term Care Coop 120, Metals Fabrication (Welding) 110/120 Metals Processing 110, Mill and Cabinet 120, Music 112, Music 122, Nutrition for Healthy Living 120, Outdoor Education 110, Power Chain and Chassis 110, Residential Finish 120, Sport & Recreation Leadership 120, Tune-up and Emissions 120, Visual Arts 110/120, and Wellness through Physical Education 110

***Automotive Electrical Systems 120** – if used as a science credit, students must select a different Fine Arts/Life Role credit.

Students entering Grade 12

- 9. English 12 _____
- 10. Math (if not done) _____
- 11. _____
- 12. _____
- 13. _____
- 14. _____
- 15. _____
- 16. _____
- 9. _____
- 10. _____

Choose 3 alternate courses and list them in order of preference:

Alternate #1: _____

Alternate #2: _____

Alternate #3: _____

You need two of the following Math courses to graduate (NRF 10, Foundations 110, Fin & Workplace 110, Fin & Workplace 120 OR NBCC Skilled Trades Math 120) ***

These Courses Cannot be selected as Alternates

All Level 1 Courses	Auto Electrical Systems 120	Culinary Tech 110/120
Coop 120	Framing and Sheathing 110	Intro to Skilled Trades 110
Metals Fabrication (Welding) 110/112	Mill & Cabinet Work 120	Outdoor Education 110
Personal Interest 1 & 2	Power Train and Chassis 110	Residential Finish and Insulation 120
Sport & Rec Leadership 120		

Leo Hayes High School